

129

130

131

100

135

L. D. Osborne
1152

S. L. Mather
4350

L. Brewster, et al
800

A. B. & F. L. Johnson
1266

J. K. Ingerson
2699

Murray Woodin

Lillian P. Adams

E. E. Moyer
1754

E. N. & M. Steinbeck
3066

D. D. Thwing
2029

D. D. & E. M. Thwing
100

James H. Pike
475

Wesley A. Goddard
1185

Frank Thwing
1723

W. H. Stone
100

Geo. H. Baker

B. & O. R. R.

CHARDON-MENTOR ROAD

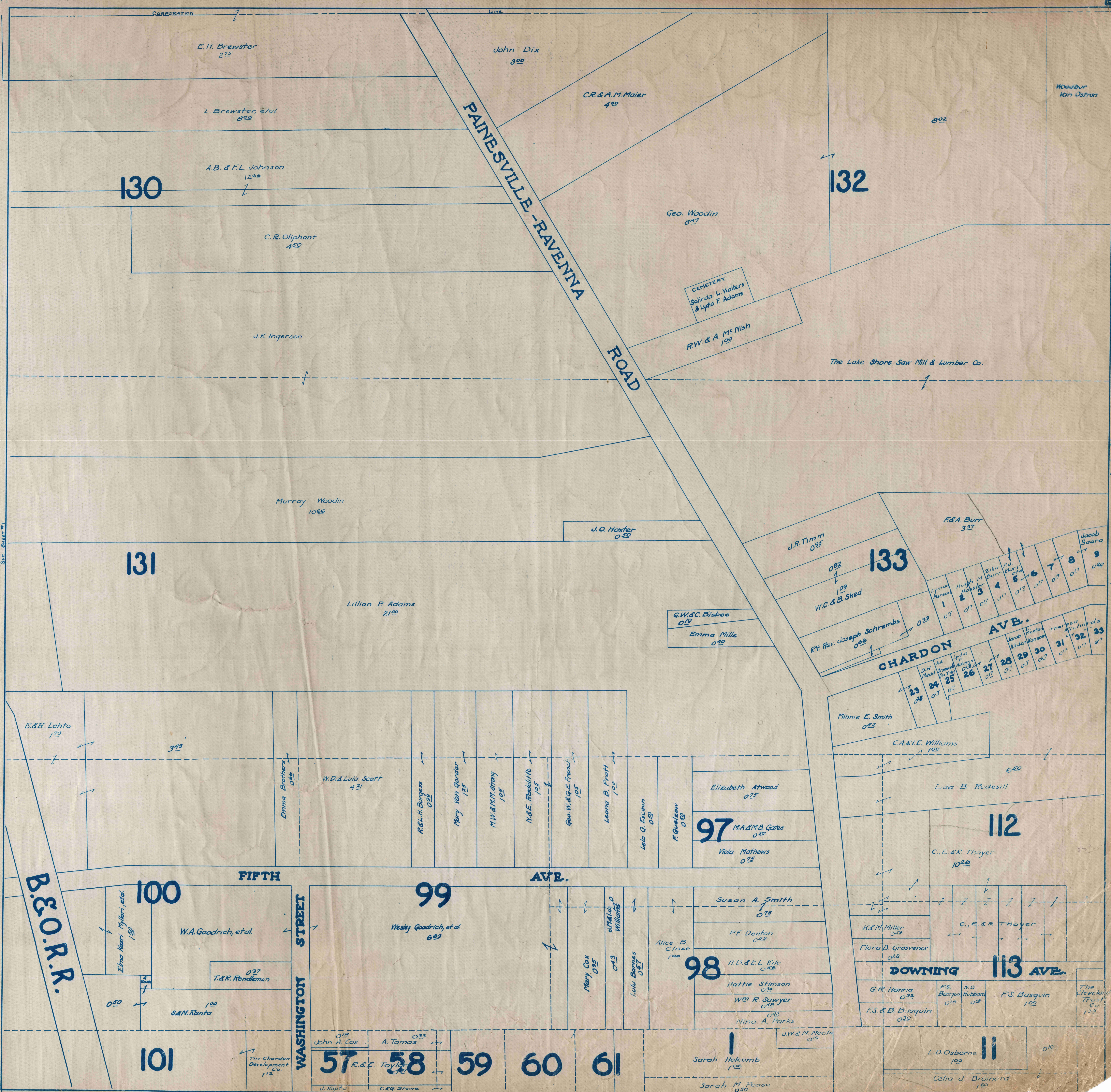
FIFTH AVE.

CORPORATION LINE

SEE SHEET #2

SEE SHEET #2

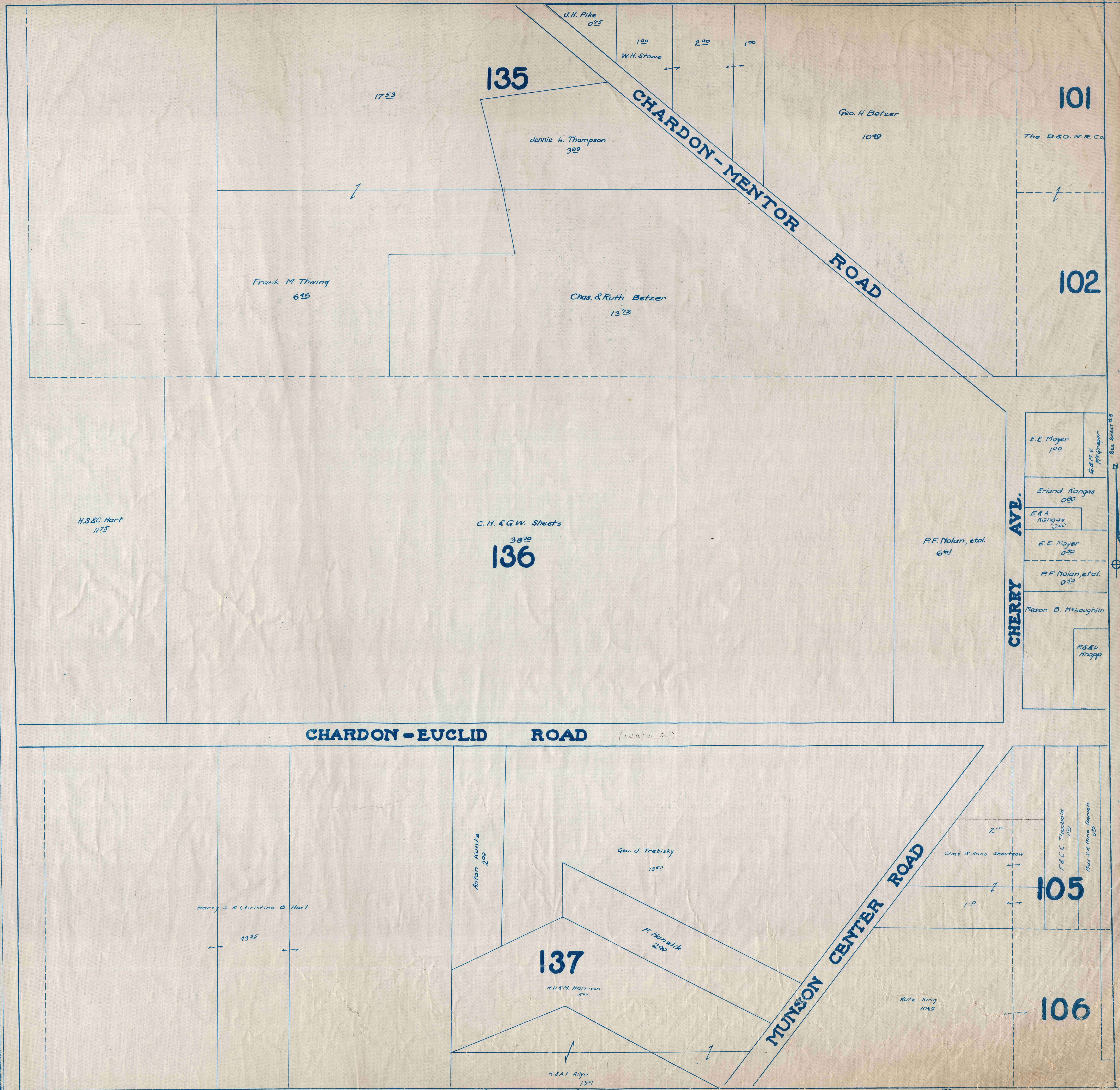
B. & O. R. R.

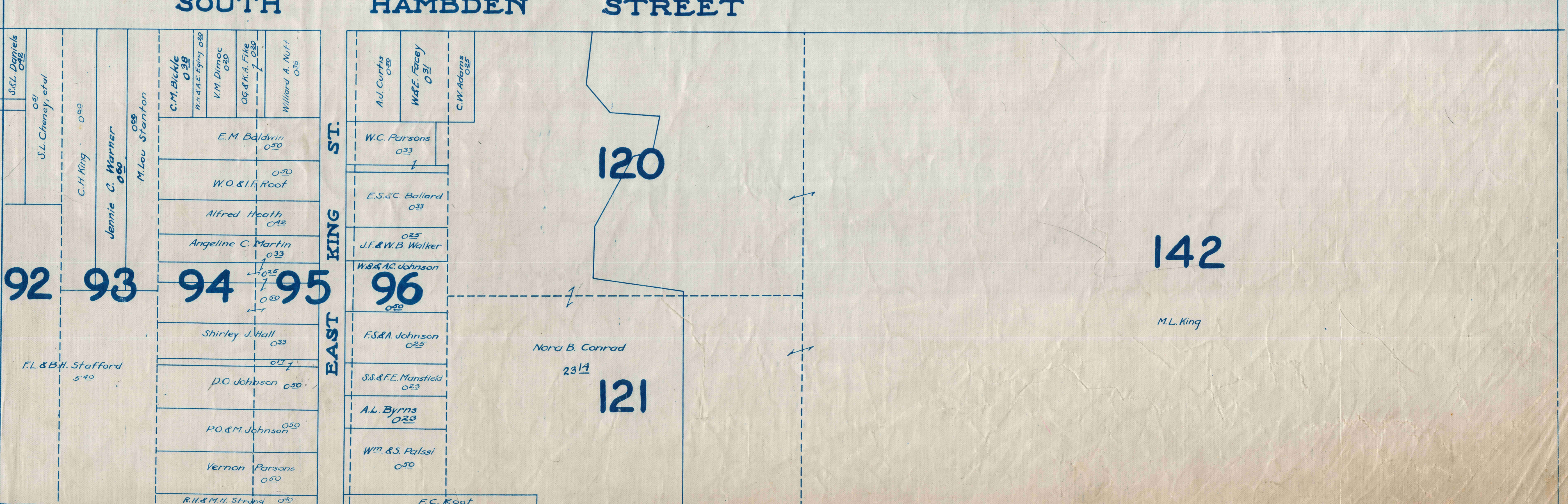
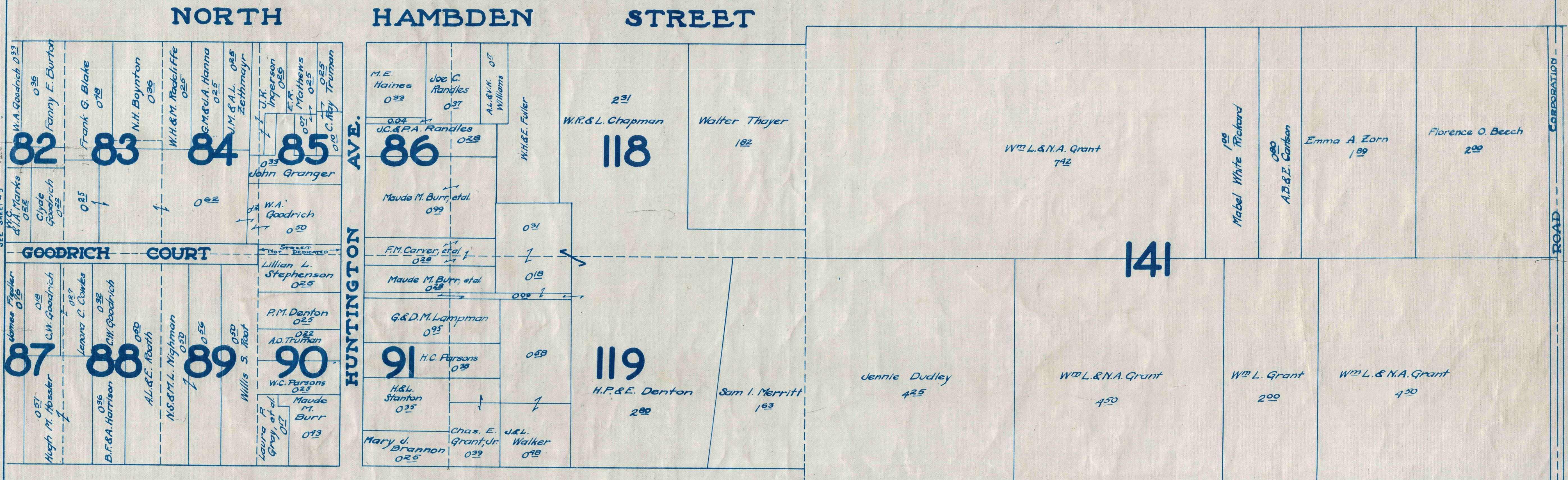
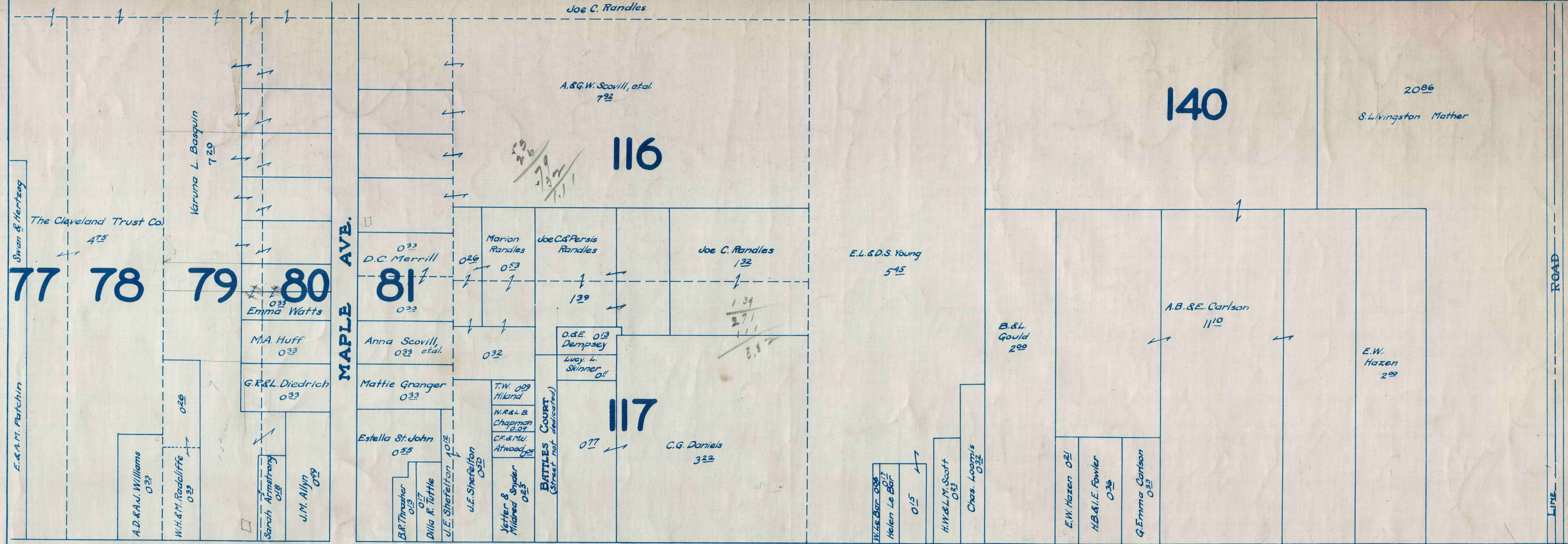


SEE SHEET #1

SEE SHEET #3

B. & O. R.R.





108

Kate King
284

J.H. Murray

PARK AVE.

R. & A. F. Allyn
1302

137

H.S. & C. Hart

B.D. Presley
1319

107

H.D. Smith

A.J. & G.A. Rhodes
1525

Chas. Scimecca
2300

138

D.E. Allyn, et al
2100

Mabel L. Wilmot
600

E.A. Fowler
686

MUNSON-CENTER ROAD

Wm. G. King
4000

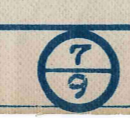
139

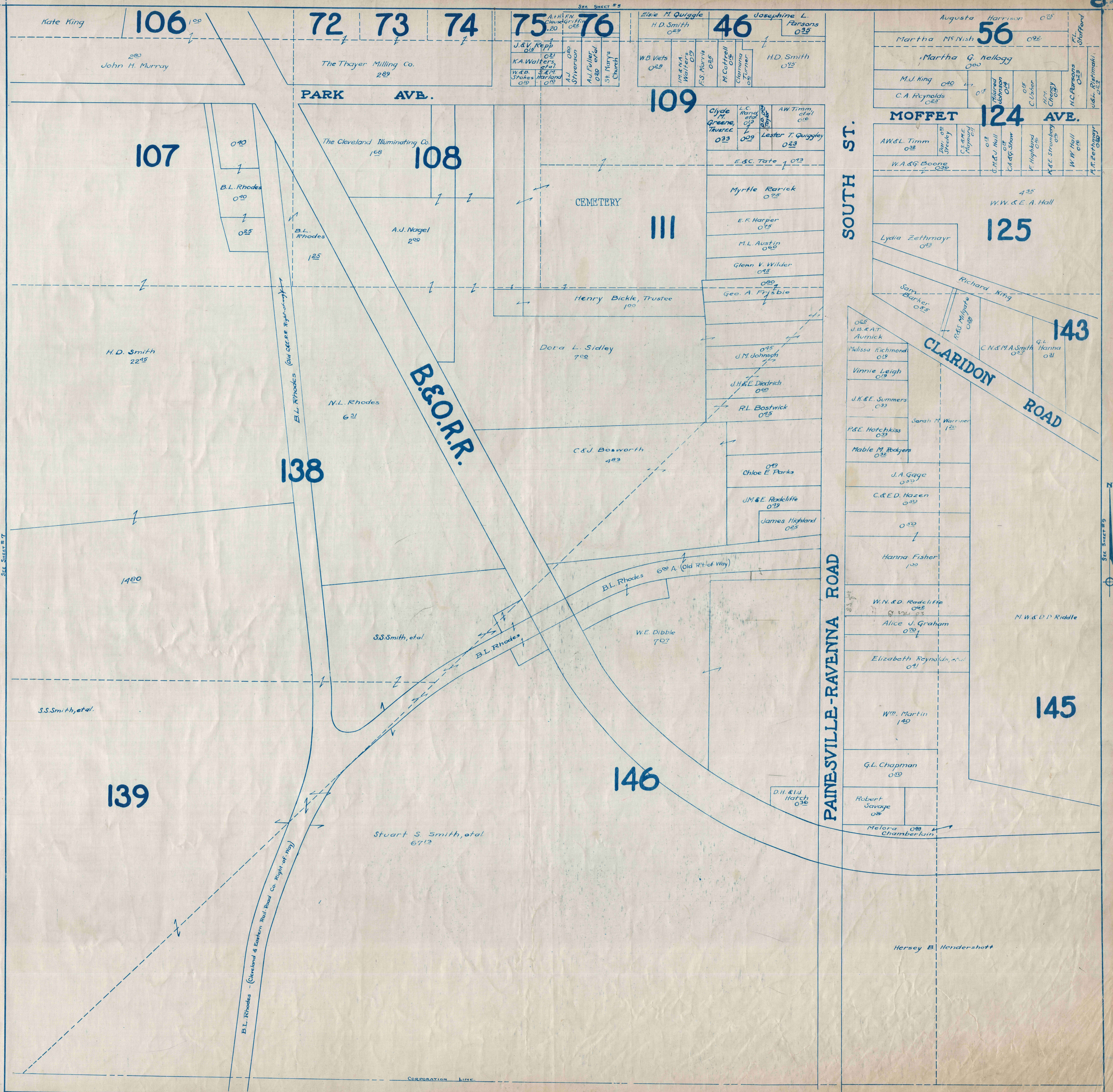
Stuart S. Smith

S.L. Rhodes

SEPARATION LINE

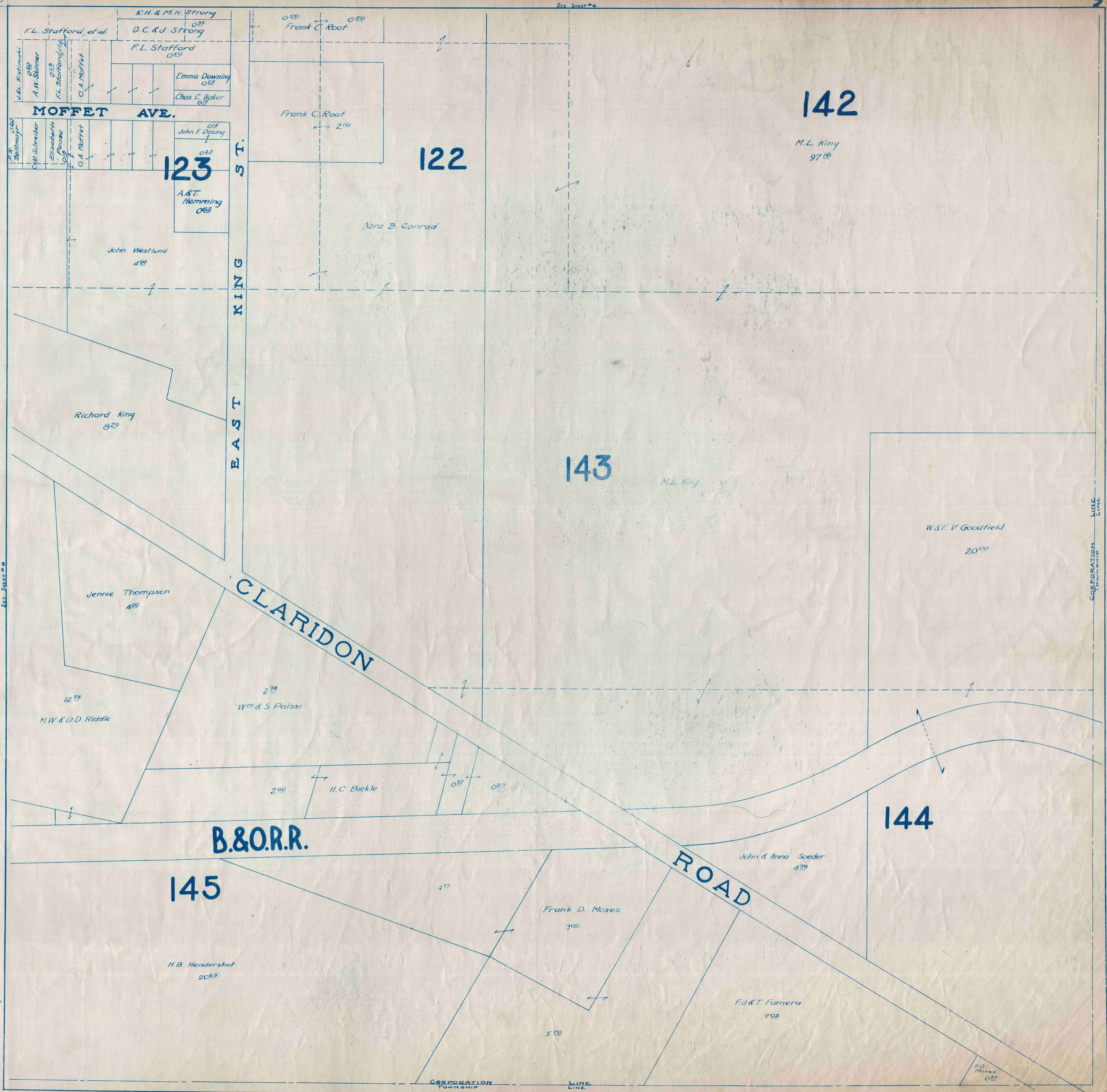
SEE SHEET #5





SEE SHEET #7

SEE SHEET #9



SEE SHEET #8

CORPORATION TOWNSHIP LINE